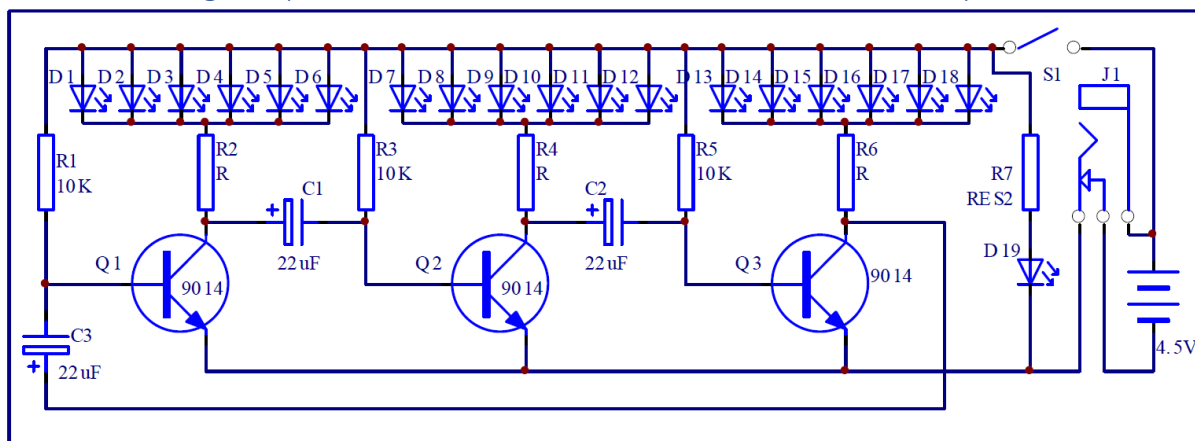


# LED Christmas Tree Kit

## Assembly Manual

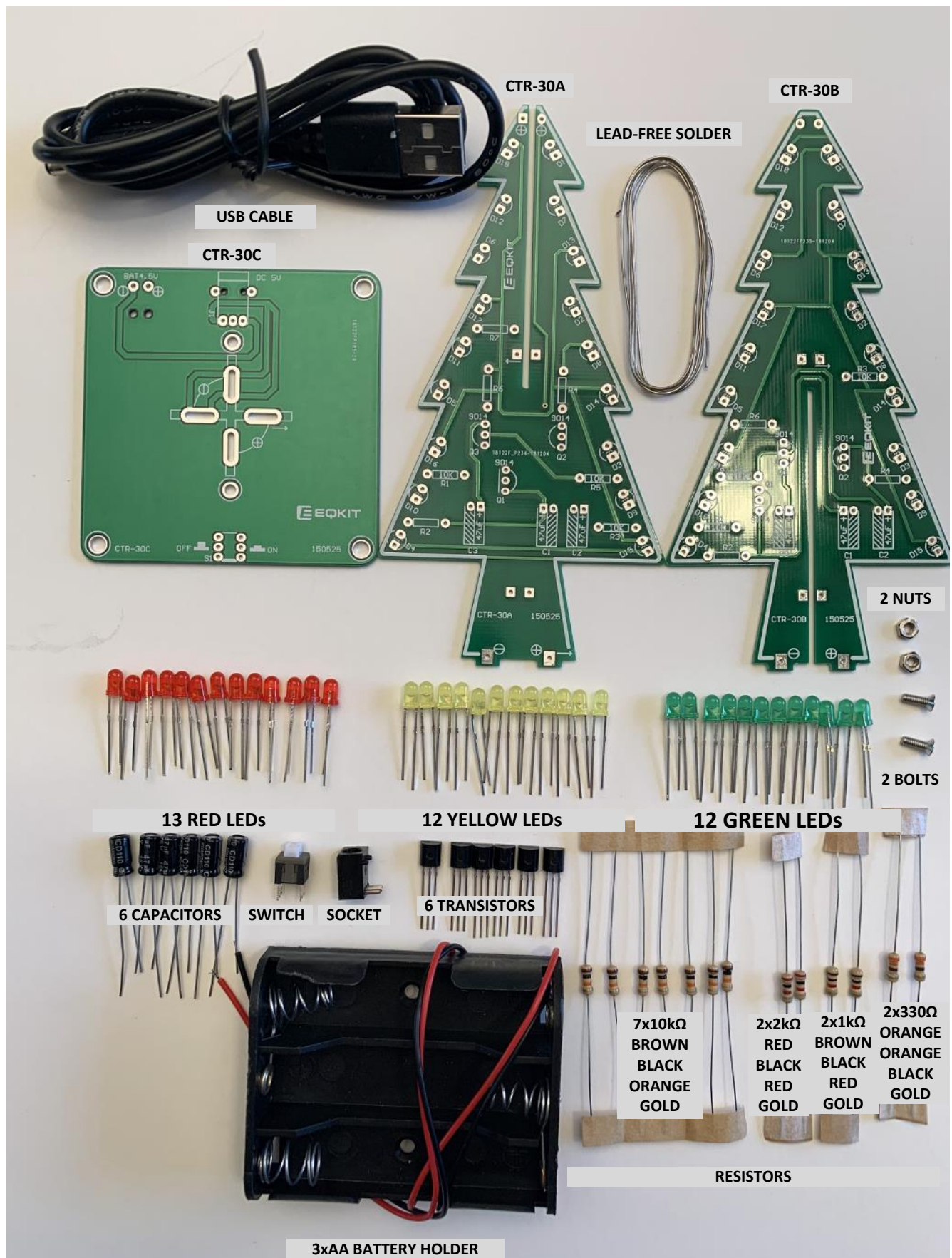
Circuit Schematic Diagram (CTR-30A and CTR-30C Shown. CTR30-B is similar)



## Printed Circuit Board Reference Designators

Designator	Type/Value
R1, R3, R5, R7	RESISTOR 10kΩ
R2	RESISTOR 2kΩ
R4	RESISTOR 1kΩ
R6	RESISTOR 330Ω
D1-D6, D19	LED RED
D7-D12	LED YELLOW
D13-D18	LED GREEN
Q1-Q3	TRANSISTOR S9014
C1-C3	CAPACITOR 47uF, 16V
CTR-30A	PRINTED CIRCUIT BOARD
CTR-30B	PRINTED CIRCUIT BOARD
CTR-30C	PRINTED CIRCUIT BOARD
S1	SWITCH
J1	SOCKET
BATT 4.5V	BATTERY HOLDER

## Illustrated Parts List



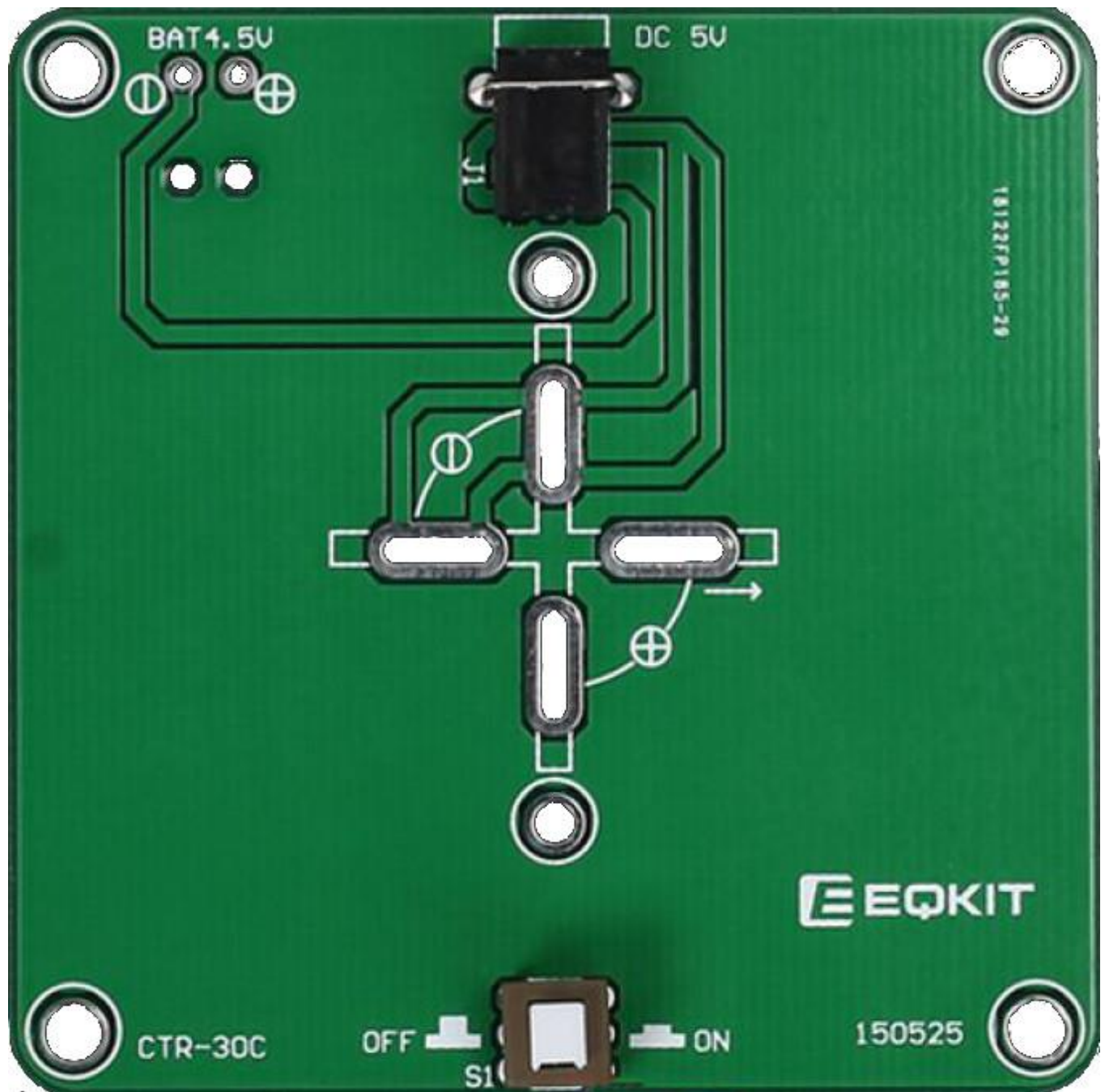
## Solder components to CTR-30A and CTR-30B





## Solder Switch and Socket to CTR-30C

Important Note: The notch in the switch must face outwards.



### Solder CTR-30A and CTR-30B Together and Then to CTR-30C

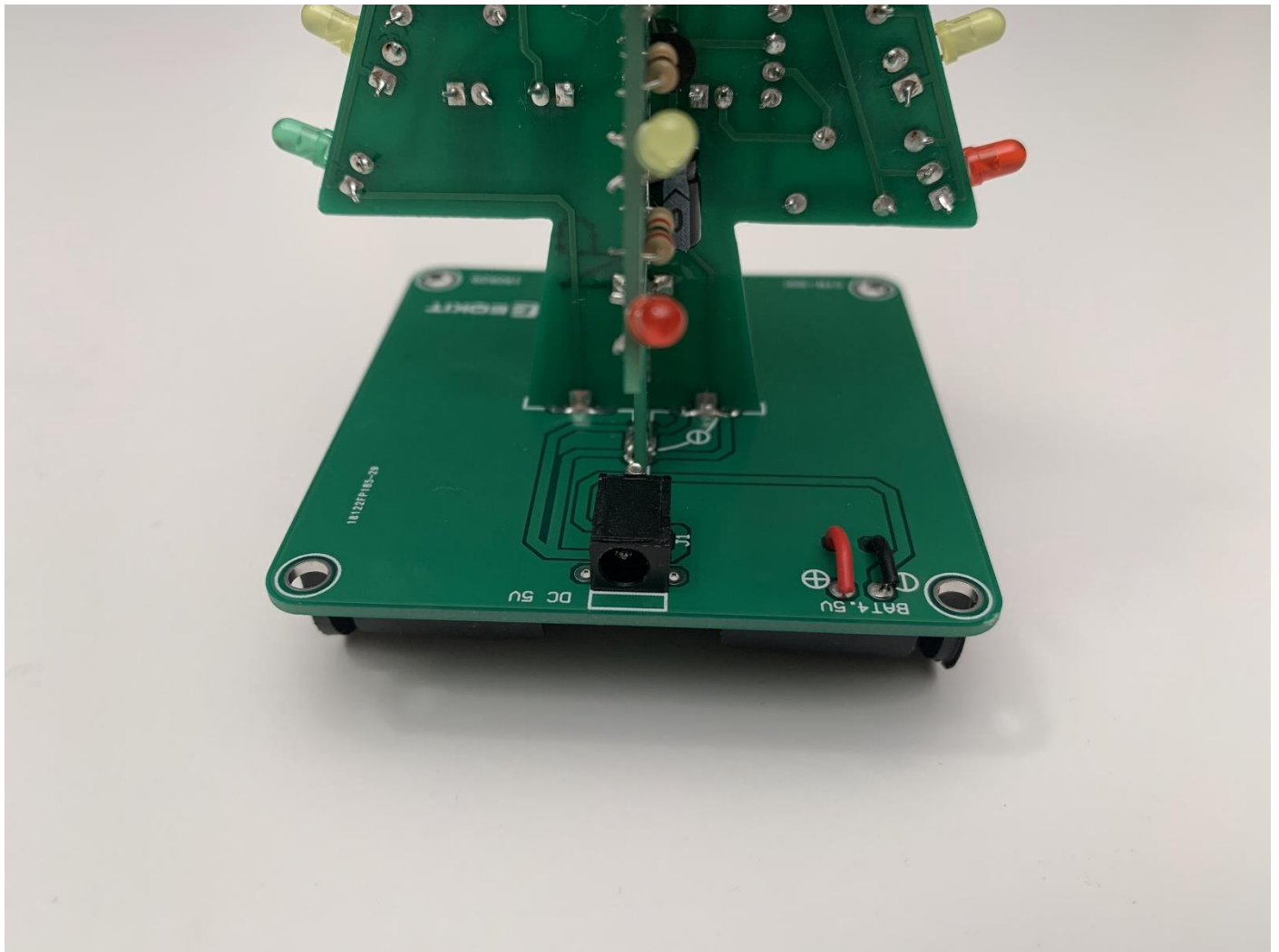
Important Note: Solder bridge the pads close to the trunk on all sides. Install the last RED LED on the top, but do not solder bridge both pads (you can bridge one on either side).



Feed the Battery Holder red and black wires through CTR-30C  
Mount the Battery Holder with the nuts and bolts



Solder the Battery Holder red and black wires to the top of CTR-30C





Install 3 x AA cells, or connect to a USB port via the USB cable. Press the switch on

